



Duke Road, London, W4 2DF

Guide Price £1,750,000

WHITMAN & CO.

SALES · LETTINGS · COMMERCIAL

- Fully extended period family home
- Landscaped west facing private garden
- Sought after Glebe Estate location
- Fabulous kitchen/dining/family room
- Four beds/three baths
- No onward chain

Tenure - Freehold
Local Authority - Hounslow
Council Tax - Band F

THE PROPERTY

A beautifully presented period family home situated in the very popular 'Glebe Estate' within a couple of minutes walk of Chiswick High Road with its array of boutique shops, bars and restaurants. The property is considered to be larger than average for the surrounding area with the accommodation comprising a drawing room, fabulous fully extended kitchen/dining/family room, study/office/TV room, a primary bedroom suite with a luxurious en-suite bathroom with walk-in shower area, three further bedrooms, two further shower rooms, ground floor cloakroom, and a landscaped private west facing rear garden. The property is presented in immaculate condition throughout. Local transport links include both Turnham Green and Chiswick Park tube stations, numerous local bus routes and convenient vehicular access via the A4/M4 to Central London, Heathrow and The West. No onward chain.

Duke Road, W4

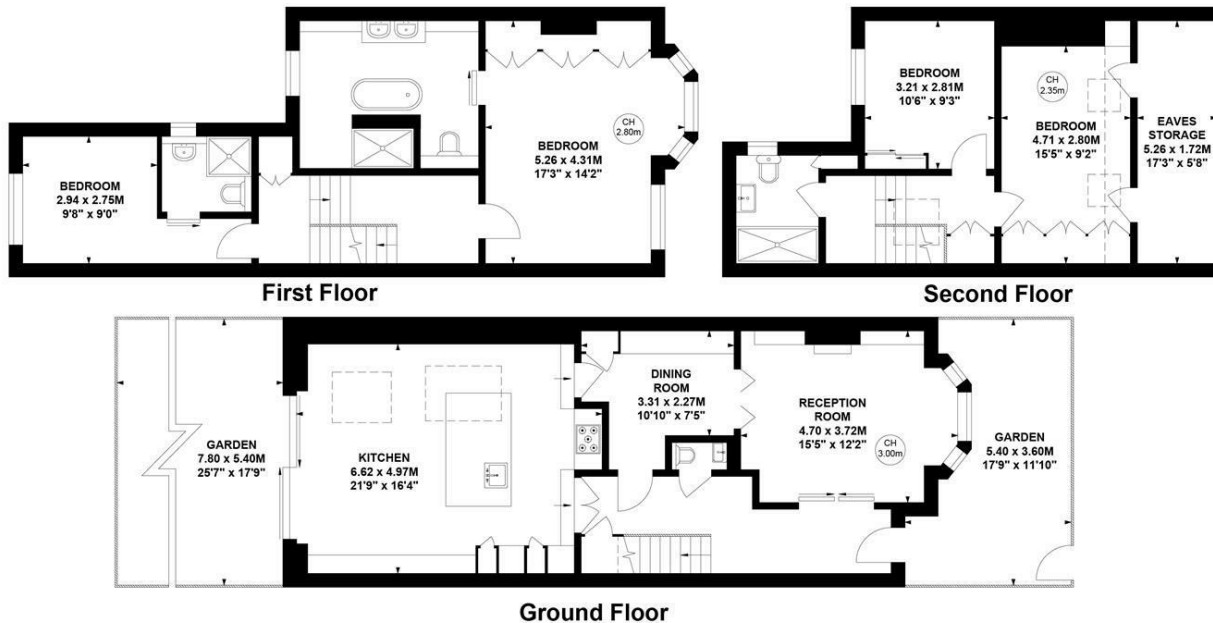
Approximate Gross Internal Area

174.25 sq m / 1876 sq ft
(Including Eaves Storage)

Eaves Storage
9.04 sq m / 97 sq ft



Key :
CH - Ceiling Height



Not to scale, for guidance only and must not be relied upon as a statement of fact.
All measurements and areas are approximate only

SITUATION



5-7 Turnham Green Terrace, Chiswick, London, W4 1RG

Tel 020 8747 8800

E-mail sales@whitmanandco.com

Website www.whitmanandco.com



MISREPRESENTATION ACT 1967

Whitman & Co. for themselves and for the vendors give notice that these particulars do not constitute any part of, an offer of contract. All statements contained in these particulars are made without responsibility on the part of Whitman & Co. or the vendor. None of the statements contained in these particulars is to be relied upon as statements or representations of facts. Any intending purchaser must satisfy himself by inspection or otherwise as to the correctness of each of the statements contained in these particulars. The vendor does not make or give, and neither Whitman & Co. or any person in their employment has any authority to make or give, any representation or warranty whatever in relation to the property.